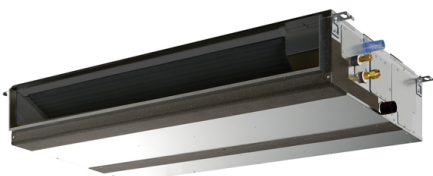


Air Conditioning

Product Information

PEFY-P50VMA-E : Indoor Unit

Ceiling Concealed Ducted



The PEFY-P-VMA-E ducted indoor unit is concealed within the ceiling space to allow unobtrusive air conditioning. Flexibility of duct layout allows air flow patterns to be arranged to suit any application.

FEATURES



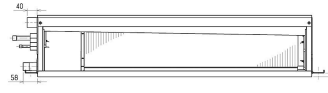
INDOOR

Heating Capacity (kW) (nominal)	6.3
Cooling Capacity (kW) (nominal)	5.6
High Performance Heating Capacity (kW) (UK)	6.3
COP Priority Heating Capacity (kW) (UK)	5.9
Cooling Capacity (kW) (UK)	5.3
Cooling Capacity (Hi-Sens Mode) (kW) (UK)	4.1
SHF (UK)	0.79
SHF (Hi-Sens Mode) (UK)	0.88
Heating Power Input (kW) (nominal)	0.09
Cooling Power Input (kW) (nominal)	0.11
Airflow (m ³ /min) - Lo-Mi-Hi	12 - 14.5 - 17
External Static Pressure (Pa)	35 - 70 - 150
Sound Pressure Level (dBA) - Lo-Mi-Hi	25 - 29 - 32
Weight (kg)	26
Dimensions (mm) Width	900
Dimensions (mm) Depth	732
Dimensions (mm) Height	250
Electrical Supply	220-240V, 50HZ
Phase	SINGLE
Running Current (A) - Heating / Cooling	0.63 / 0.74
Fuse Rating (BS88) - HRC (A)	6
Mains Cable No. Cores	3

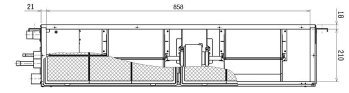
DIMENSIONS

PEFY-P50VMA-E

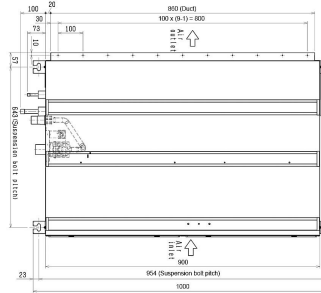
Front View >



Rear View >



Upper View >



Side View >

